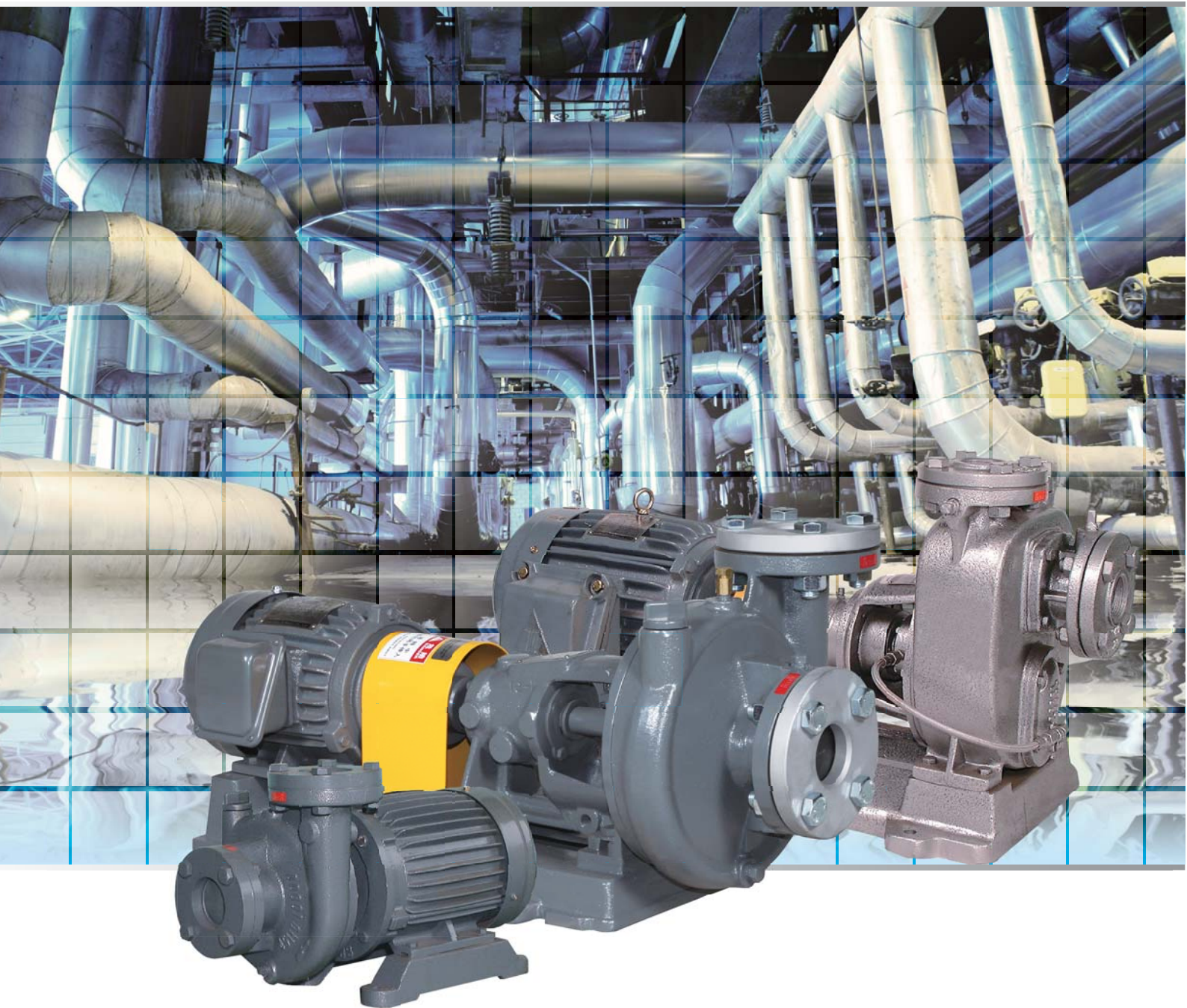


 **三錦** 離心式
自吸式 **泵浦**

SKH · SP · SPH · O

Centrifugal Pump · Self-priming Pump



產品特點

- ◆ 適合壓力0.6Mpa以下液體輸送，產品性能符合CNS2138.B4004小型渦卷泵標準與ISO 9908離心泵技術規範。其效率及性能表現能夠與國際標準接軌。
- ◆ 入口吸力強，具備低NPSHr特性。
- ◆ 3D高效率全密閉式葉輪，葉輪皆經動平衡校正至ISO 1940 G6.3等級。可提升泵浦能源效率並使泵浦運轉平穩，延長軸承使用壽命。
- ◆ 出入口法蘭採用JIS工業標準，強度及安裝尺寸合於國際規範。
- ◆ 模組化標準零件互換性高，保養容易。模組化設計可減少備用零件複雜度。
- ◆ 水力平衡設計可有效減低軸向力減少軸封負荷。
- ◆ 完整的週邊支援能力：可對應填料、單機械軸封、雙機械軸封等配置方式，亦可視製程條件需要加裝軸封沖洗套件。
- ◆ 可靠的軸承壽命：軸承座採用長軸承間距設計(LDBB)設計，有效減少軸心磨損機率。兩組標準付防塵蓋式滑脂潤滑推力軸承，其軸承L₁₀額定壽命至少10,000小時以上。配置機油潤滑型軸承座時，其配備的迷宮式密封，可大幅延長泵浦平均維修間隔時間(MTBPM)。
- ◆ 聯軸器：標準配備為E-FLEX高扭矩撓型聯軸器，具有高容許不對心值特性。
- ◆ 底座系統：可選用馬達可調整型底座，增加馬達調整便利性。

產品應用

一般工廠給水、高樓給水、冷卻水、游泳池化學工業、食品工業、紡織染整工業、公害防止設備，污水處理用水等。



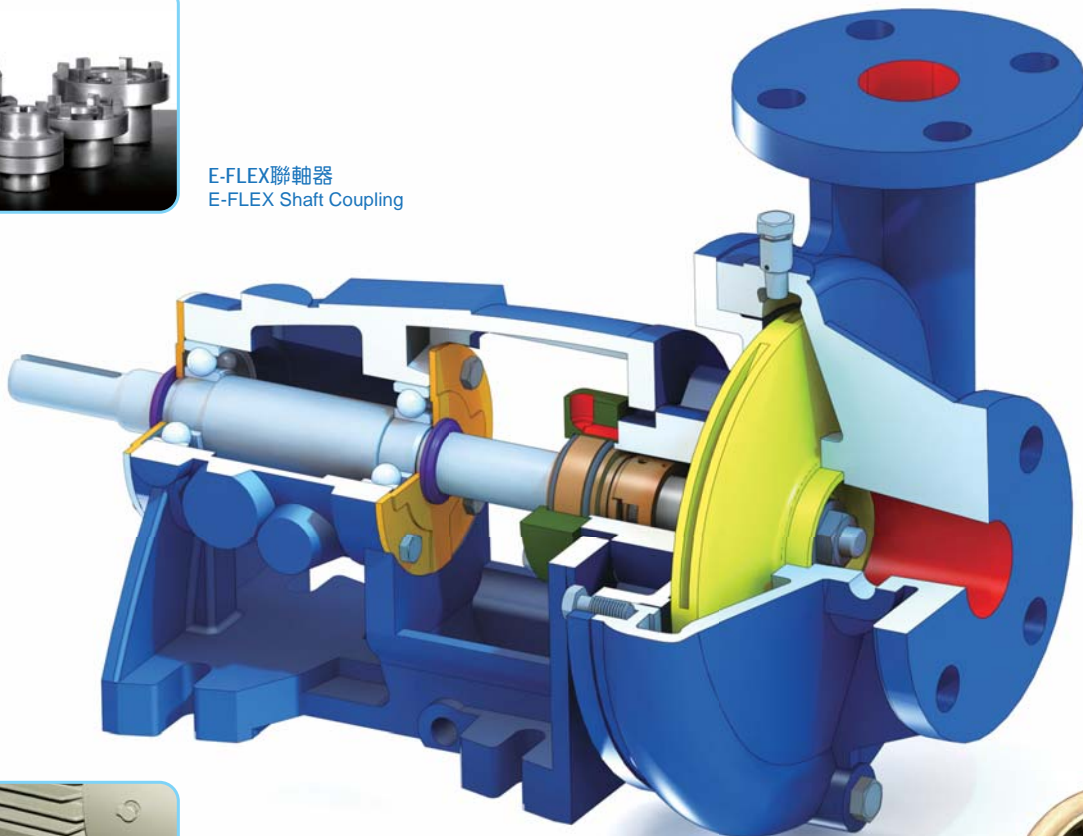
E-FLEX聯軸器
E-FLEX Shaft Coupling

Product Features

- ◆ Suitable for liquid transmission with basic design working pressure of 0.6Mpa. The pump performance comply with CNS2138.B4004 volute pump standard and ISO 9908 technical specifications for centrifugal pumps. World-class efficiency and performance.
- ◆ Strong suction at inlet, low NPSHr.
- ◆ 3D high-efficiency enclosed impeller, dynamic-balance calibrated to ISO 1940 grade G6.3. Improves pump energy efficiency and stabilizes pump operation, prolonging bearing lifespan.
- ◆ Inlet/outlet flange based on JIS industrial standard, strength and installation dimensions compliant with international specifications.
- ◆ Modular parts are highly interchangeable and easy to maintain. Modular design also reduces complexity of spare parts.
- ◆ Hydraulic balance effectively reduces axial force and alleviates seal pressure.
- ◆ Complete peripheral support: Supports configurations for packing seal, single mechanical seal and double mechanical seal, and provides seal flushing kit if required in application process.
- ◆ Reliable bearing lifespan: Long between-bearing-distance (LDBB) effectively reduces shaft wearing. Pre-greased thrust bearing with dust cover provides minimum L₁₀ bearing life of 10,000 hours. Oil lubricated bearing bracket equipped with non-contact labyrinth seal, providing several times longer Mean Time Between Pump Maintenance (MTBPM) than regular oil seal.
- ◆ Coupling : Equipped with standard E-FLEX high-torque flexible coupling with high alignment allowance.
- ◆ Baseplate system: Optional motor-adjustable baseplate facilitates motor adjustment work.

Application

Water supply to plants and high-rise buildings, cooling water system, swimming pool water system, water circulation, chemical industry, foods industry, textile and dyeing/finishing industry, pollution control equipment and wastewater treatment.



馬達可調整底座
Motor-adjustable baseplate



高效率密閉式葉輪
Closed-impeller

完整的軸密封解決方案

- ◆ 填料密封
使用石墨或PTFE含浸的軟性條狀材料作為密封，安裝成本低可廣泛適用油類輸送及一般化工製程，或是不適合使用機械軸封環境，適用壓力5kg/cm²以下。
- ◆ 機械軸封及軸封沖洗系統
機械軸封可適用於較高壓力使用場合。SKH離心泵最大可支援至兩組機械軸封以及卡式軸封。當製程液體有較多汙染物時，可加裝軸封沖洗系統套件。

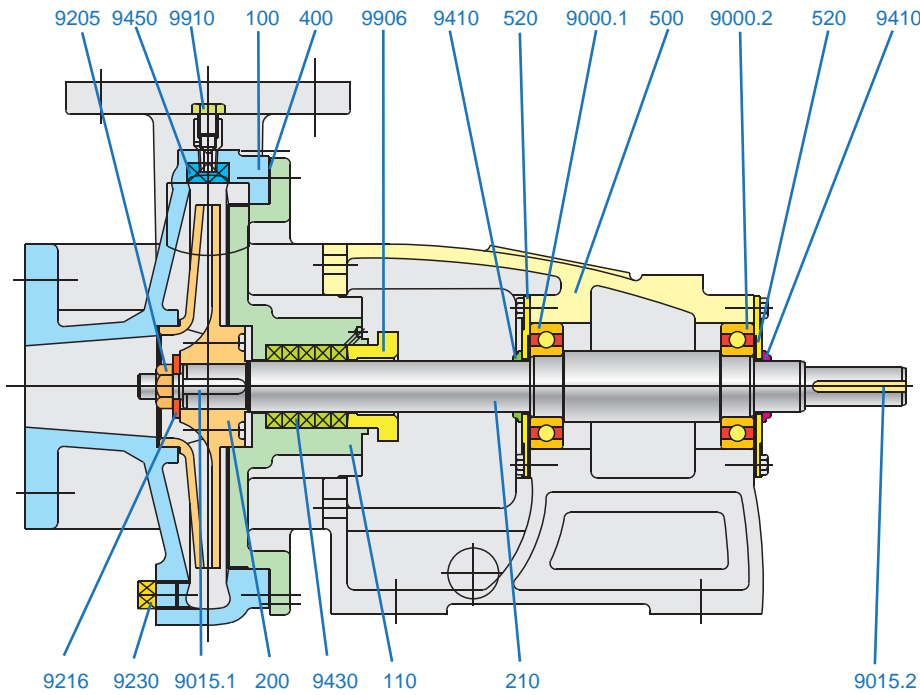
Comprehensive Shaft Seal Solutions

- ◆ Soft Packing
Use of graphite or PTFE immersed flexible strip materials for sealing purposes can reduce the installation cost. It is widely used for oil transportation and general chemical processes and in the environment where mechanical shaft seals are not suitable.
- ◆ Mechanical Shaft Seal and Seal Flushing Plans
Mechanical shaft seal can be used in an environment of higher pressure. SKH Series centrifugal Pump at its most can support up to two sets of centrifugal shaft seals and cartridge shaft seal. When the processing liquid contains more contaminants, additional seal flushing plan is applicable.

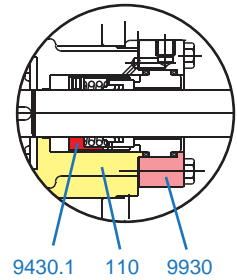
1. 填料密封 Soft Packing
2. 泛用型機械軸封 Universal Mechanical Seal
3. 化工型機械軸封 Chemical Mechanical Seal
4. 卡式型機械軸封 Cartridge Mechanical Seal



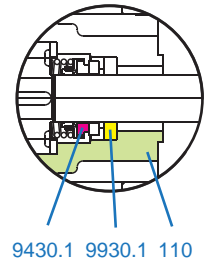
SKH 零件及構造表 Sectional Drawing and Parts List



化工型機械軸封 Chemical Mechanical Seal

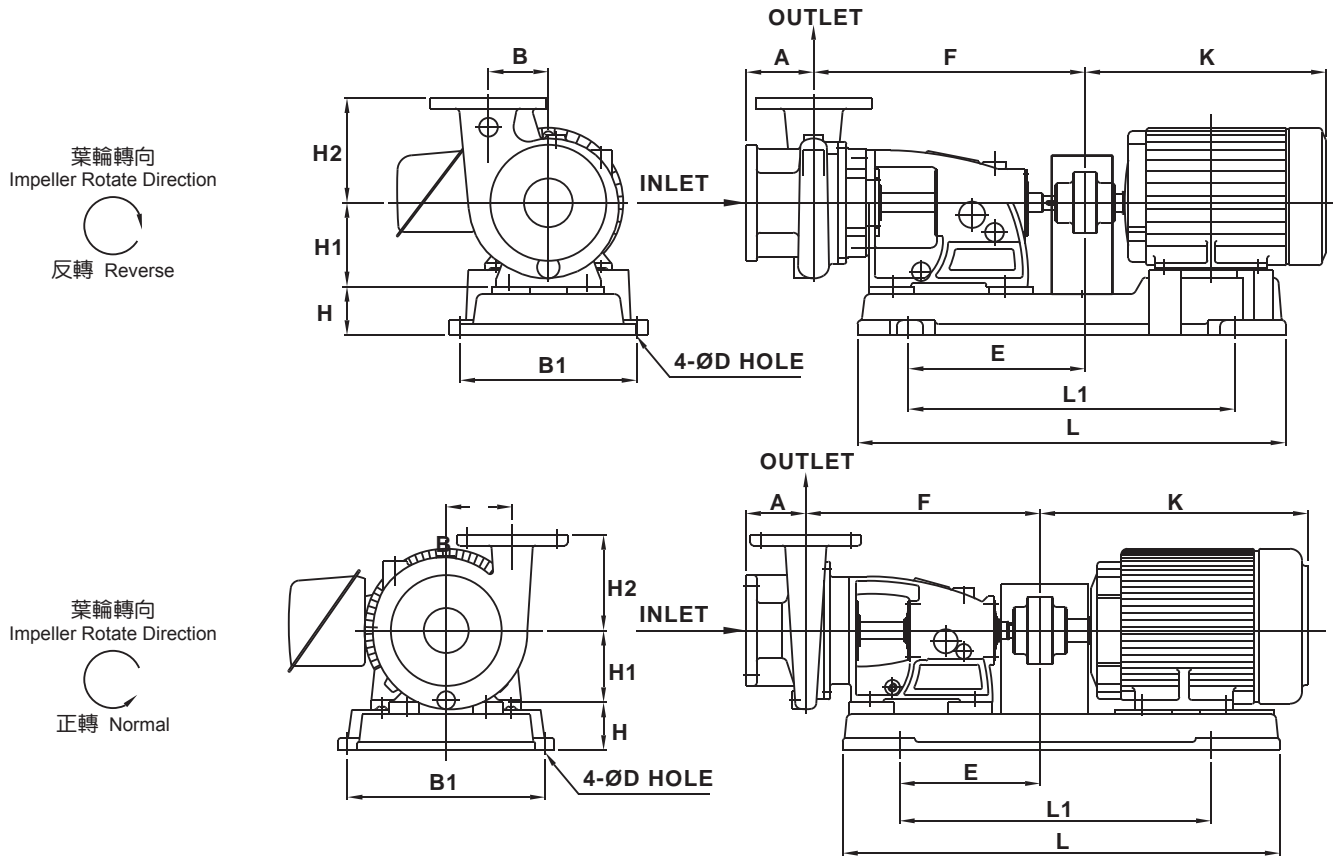


泛用型機械軸封 Universal Mechanical Seal



編號 No.	零件名稱 Parts Name	Mat. 1	Mat. 2	Mat. 3	編號 No.	零件名稱 Parts Name	Mat. 1	Mat. 2	Mat. 3
100	機殼 Casing	FC200	SCS13	SCS14	9205	葉輪防鬆螺帽 Locknut, Impeller	SUS304	SUS304	SUS316
110	中間支座 Adaptor	FC200	SCS13	SCS14	9216	葉輪墊圈 Washer, Impeller	SUS304	SUS304	SUS316
200	葉輪 Impeller	BC	SCS13	SCS14	9230	塞頭 Plug	FC200	SCS13	SCS14
210	軸 Shaft	S45C	SUS304	SUS316	9410	擋水環 Water Slinger	NBR	NBR	NBR
400	墊片 Gasket	非石棉 Non-Asbestos			9430	填料 Soft Packing	依使用條件指定 According to Process Conditions		
500	軸承座 Bearing Bracket	FC200	FC200	FC200	9430.1	機械軸封 Mechanical Seal	依使用條件指定 According to Process Conditions		
520	軸承蓋 Bearing Cover	SS400			9450	注水栓 Water Fill Plug	塑膠 Plastic	SCS13	SCS14
9000.1	軸承 Bearing	63xx or 62xx			9906	填料蓋 Gland Cover	FC200	SCS13	SCS14
9000.2	軸承 Bearing	63xx or 62xx			9910	排氣捲克 Air Cock	BC	SCS13	SCS14
9015.1	鍵, 葉輪 Key, Impeller	SUS304	SUS304	SUS316	9930	軸封蓋 Shaft Seal Cover	FC200	SCS13	SCS14
9015.2	鍵, 聯軸器 Key, Coupling	S45C	S45C	S45C	9930.1	軸封背墊 Shaft Seal Spacer	SUS304	SUS304	SUS316

SKH 外型尺寸圖 Dimensions



單位Unit (mm)

泵浦尺寸 Pump Size	入口 Inlet	出口 Outlet	A	F	B	H2	H1	IEC馬達框號 Motor Frame	HP		L	L1	E	H	B1	K	D
									2P	4P							
* 25-10	25	25	54	329	68	105	100	71	0.5	0.5	476	362	217	60	200	250.5	11.5
25-14	25	25	65	332	80	110	100	80	1	1	520	304	174	55	210	282.5	11.5
25-17	25	25	66	331	100	110	100	90L	2 3	2	565	362	181	58	230	332.5	11.5
* 40-12	40	40	49	329	65	110	100	100L	-	3	578	440	213	60	260	374.5	11.5
40-18	40	40	90	327	110	150	100	112M	5	-	588	450	221	72	260	391.5	11.5
40-20	40	40	88	329	120	150	100										
* 50-12	50	50	60	329	72	115	100										
50-20	65	50	99	328	115	160	100										
* 40-18	40	40	90	344	110	150	112	90L	2 3	2	572	436	230	65	236	332.5	11.5
* 50-15	50	50	88	356	90	130	112	100L	-	3	620	400	193	52	250	374.5	11.5
* 65-13	65	65	90	357	80	140	112	112M	5	5	616	455	216	78	290	391.5	15
* 65-16	65	65	100	348	92	150	112	132S	7.5 10	-	655	495	221	95	312	454	15
* 65-17	65	65	100	349	110	150	112										
* 75-14	80	80	87	352	93	140	112										
75-18	80	80	100	349	110	150	112										
* 40-20	40	40	88	388	120	150	120	100L	-	3	650	425	216	60	290	374.5	15
40-28	40	40	100	389.5	160	190	120	112M	5	5	645	425	216	70	290	391.5	15
* 75-18-1	80	80	100	389	110	160	120	132S	7.5 10	7.5	730	520	232	80	330	454	15
75-21	80	80	115	392	140	180	120	132M	-	10	730	520	232	80	330	492	15
75-21-1	80	80	115	392	140	180	120										
75-24	80	80	135	396	155	180	120										
* 50-20	65	50	99	483.5	115	160	160	112M	-	5	710	510	309	60	290	391.5	15
* 75-18	80	80	100	485	110	160	160	132S	7.5 10	7.5	808	564	297	85	312	454	15
75-28	80	80	135	484	175	205	160	132M	-	10	808	564	297	85	312	492	15
75-33	100	80	127	488	195	197	160	160M	15 20	15	950	699	298	100	388	608	19
* 100-17	100	100	107	481	130	160	160	160L	-	20	950	699	298	100	388	652	19
100-24	100	100	126	488	170	190	160	180M	-	25	982	710	289	120	442	676.5	19
100-28	100	100	120	483	175	230	160	180L									
125-24	125	125	132	485	180	235	160										
100-33	100	100	145	540	205	240	180	132M	-	10	876	500	291	107	320	492	19
125-28	125	125	152	553	200	230	180	160M	-	15	989	578	266	105	370	608	19
								160L	-	20	989	578	266	105	370	652	19
								180M	-	25 30	1065	800	342	90	448	676.5	19
125-33	125	125	150	618	215	250	200	160L	-	20	1070	660	327	110	370	652	19
								180M	-	25 30	1100	823	256	100	440	676.5	19
								180L	-	40	1100	823	256	100	440	714.5	19

備註：1.* "二極型號。2.SKH65-13,SKH65-16,SKH75-14為出口反向。 Note：1.* " 2 Pole Models. 2.SKH65-13,SKH65-16,SKH75-14 stand for reverse rotation.

產品特點

- ◆ 流體設計源自SKH系列成熟技術，實現高效率目標。泵浦採用工業等級結構，零件標準化均可互換，強度較一般同類產品優異。
- ◆ 可使用化工用機械軸封，以對應具有腐蝕性之輸送液體。
- ◆ 出入口法蘭採用JIS工業標準，確保施工安裝品質。
- ◆ 全密閉式高效率葉輪，長期使用可節省可觀電費。葉輪皆經動平衡校正至ISO 1940 G6.3等級，運轉平穩。
- ◆ 泵浦與馬達同軸傳動，適合安裝空間有限之使用場合。

非220/380/440V之特殊電壓或非SUS410之軸心材質為特殊定製馬達，交貨時間較長，請先預留時程。

Product Features

- ◆ Fluid design based on mature technology of the SKH series achieves high efficiency. Industrial-grade structure, interchangeable standardized parts, and powerful performance makes it far superior than other similar products.
- ◆ Mechanical seal for chemical processing may be used in the transmission of corrosive liquid.
- ◆ Inlet/outlet flange dimensions based on JIS industrial standard ensures construction/ installation quality.
- ◆ Enclosed high-efficiency impeller saves substantial amount of electricity spending in the long term. All impellers are dynamic-balance calibrated to ISO 1940 grade G6.3 for stable operation.
- ◆ Pump and motor share the same shaft, making it suitable for installation in a space constraint environment.

For customized motors, including non-220/380/440V voltage and non-SUS410 shaft material, please allow for longer delivery time.

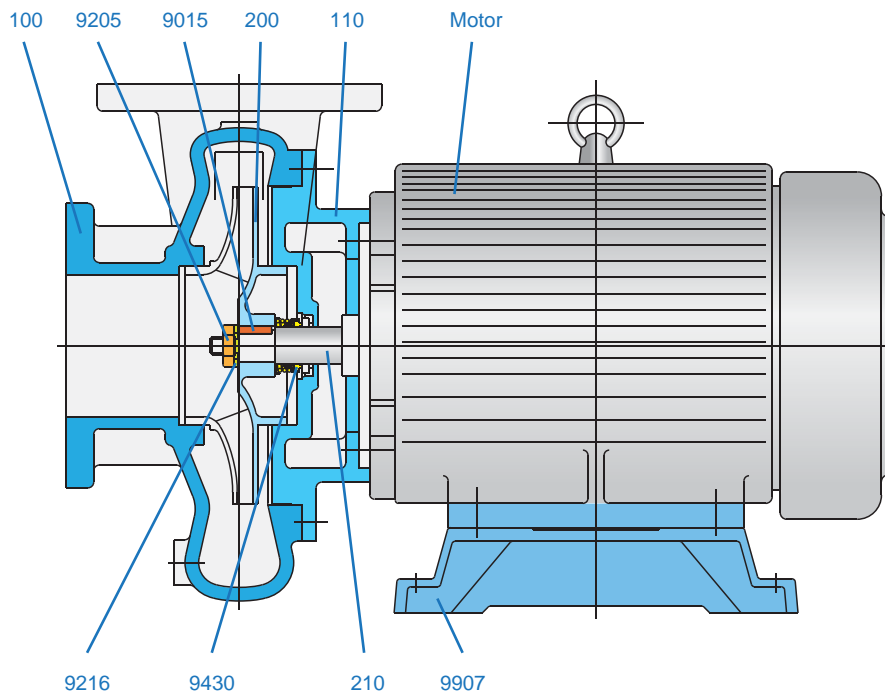
產品應用

冷卻水循環、高樓給水、一般工程、游泳池等用水、機械設備液體輸送。

Application

Cooling water circulation, high-rise water supply, general engineering, swimming pool water, liquid delivery equipment.

SP/SPH 零件及構造表 Sectional Drawing and Parts List

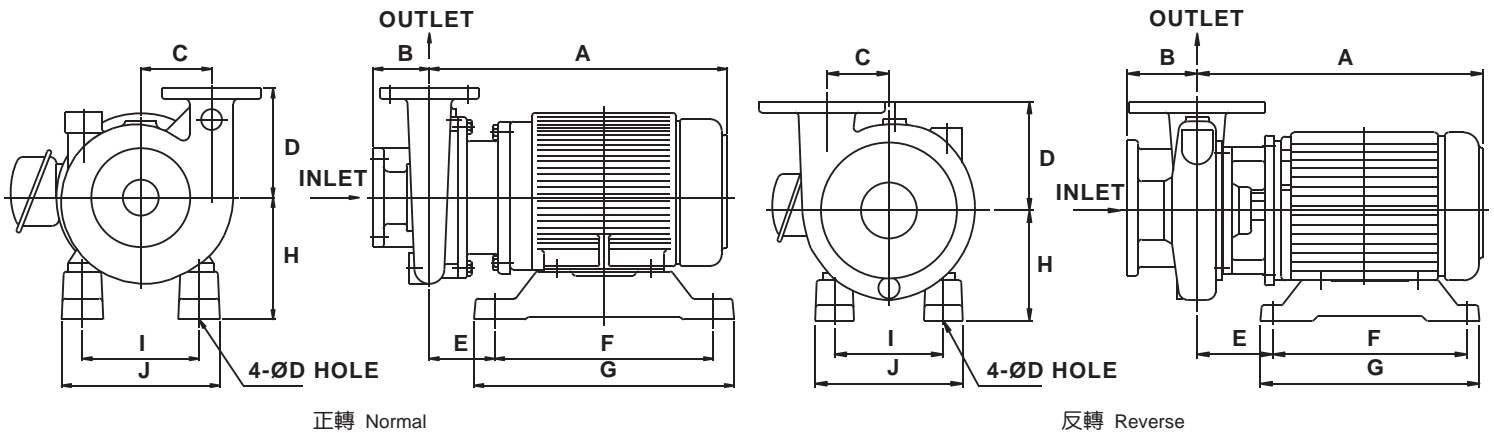


編號 No.	零件名稱 Parts Name	Mat. 1	Mat. 2	Mat. 3
100	機殼 Casing	FC200	SCS13	SCS14
110	中間支座 Adaptor	FC200	SCS13	SCS14
200	葉輪 Impeller	BC	SCS13	SCS14
210	軸 Shaft	SUS410	SUS304	SUS316
9015	鍵, 葉輪 Key, Impeller	SUS304	SUS304	SUS316
9205	葉輪防鬆螺帽 Locknut, Impeller	SUS304	SUS304	SUS316
9216	葉輪墊圈 Washer, Impeller	SUS304	SUS304	SUS316
9430	機械軸封 Mechanical Seal	依使用條件指定 According to Process Conditions		
9907	馬達腳座 Motor Pad	FC200	FC200	FC200

SP/SPH 規格性能表 Performance Table

型式 Type	口徑 Dia.∅ inch	馬力 Power HPxPole	揚程 Head(M)		流量 m³/min		揚程 Head(M)		流量 m³/min		揚程 Head(M)		流量 m³/min	
			50Hz	60Hz	50Hz	60Hz	50Hz	60Hz	50Hz	60Hz	50Hz	60Hz	50Hz	60Hz
SP 25-05	1"x1"	0.5HPx2P	13	18	0.032	0.038	10	15	0.046	0.055	8	12	0.052	0.062
40-10	1.5"x1.5"	1HPx2P	15	21	0.058	0.070	12	17	0.100	0.120	9	13	0.142	0.170
50-20	2"x2"	2HPx2P	15	22	0.117	0.140	13	18	0.175	0.210	10	14	0.208	0.250
65-30	2.5"x2.5"	3HPx2P	17	25	0.250	0.300	13	19	0.375	0.450	11	16	0.433	0.520
75-50	3"x3"	5HPx2P	19	28	0.333	0.400	15	22	0.517	0.620	13	18	0.633	0.760
100-75	4"x4"	7.5HPx4P	18	26	0.583	0.700	15	22	0.917	1.100	13	18	1.167	1.400
100-100	4"x4"	10HPx4P	17	25	0.833	1.000	15	21	1.167	1.400	11	16	1.400	1.680
125-150	5"x5"	15HPx4P	21	30	0.933	1.120	17	25	1.500	1.800	14	20	1.917	2.300
125-200	5"x5"	20HPx4P	19	28	1.583	1.900	17	25	2.250	2.700	15	21	2.750	3.300
125-250	5"x5"	25HPx4P	22	31	1.667	2.000	19	27	2.333	2.800	17	24	2.667	3.200
SPH 40-10	1.5"x1.5"	1HPx2P	19	28	0.042	0.050	17	25	0.067	0.080	15	22	0.083	0.100
50-20	2"x2"	2HPx2P	22	32	0.083	0.100	19	28	0.108	0.130	17	24	0.133	0.160
50-30	2"x2"	3HPx2P	26	38	0.117	0.140	22	32	0.217	0.260	19	28	0.258	0.310
65-50	2.5"x2.5"	5HPx2P	26	38	0.250	0.300	24	34	0.325	0.390	21	30	0.400	0.480
75-75	3"x3"	7.5HPx2P	29	42	0.333	0.400	25	36	0.458	0.550	21	30	0.558	0.670
75-100	3"x3"	10HPx2P	29	42	0.500	0.600	25	36	0.708	0.850	21	30	0.833	1.000
100-150	4"x4"	15HPx2P	31	44	0.667	0.800	26	38	0.933	1.120	22	32	1.208	1.450
100-200	4"x4"	20HPx2P	33	48	0.958	1.150	28	40	1.333	1.600	24	34	1.517	1.820

SP/SPH 外型尺寸圖 Dimensions



單位Unit (mm)

型式 Type	A	B	C	D	H	E	F	G	I	J	K
SP25-05	286	54	68	105	117	63	210	250	112	152	11
SP40-10	311	49	65	110	126	74	210	250	125	165	11
SP50-20	347	60	72	115	142	68	250	282	140	190	11
* SP65-30	368	90	80	140	142	97	250	282	140	190	11
* SP75-50	408	87	93	140	164	102	250	282	190	240	11
SP100-75	464	120	175	230	207	99	316	355	216	280	15
SP100-100	502	120	175	230	207	118	316	355	216	280	15
SP125-150	594	152	200	230	235	155	316	355	254	318	15
SP125-200	638	152	200	230	240	125	420	460	254	344	19
SP125-250	705	152	200	230	260	179	420	460	279	369	19
SPH40-10	304	88	90	130	126	67	210	250	125	165	11
SPH50-20	344	88	90	130	142	65	250	282	140	190	11
SPH50-30	367	88	90	130	142	88	250	282	140	190	11
* SPH65-50	404	100	92	150	164	98	250	282	190	240	11
SPH75-75	497	100	110	160	207	113	316	355	216	280	15
SPH75-100	497	100	110	160	207	113	316	355	216	280	15
SPH100-150	582	107	130	160	235	143	316	355	254	318	15
SPH100-200	582	107	130	160	235	143	316	355	254	318	15

備註：SP65-30, SP75-50, SPH65-50為出口反向。

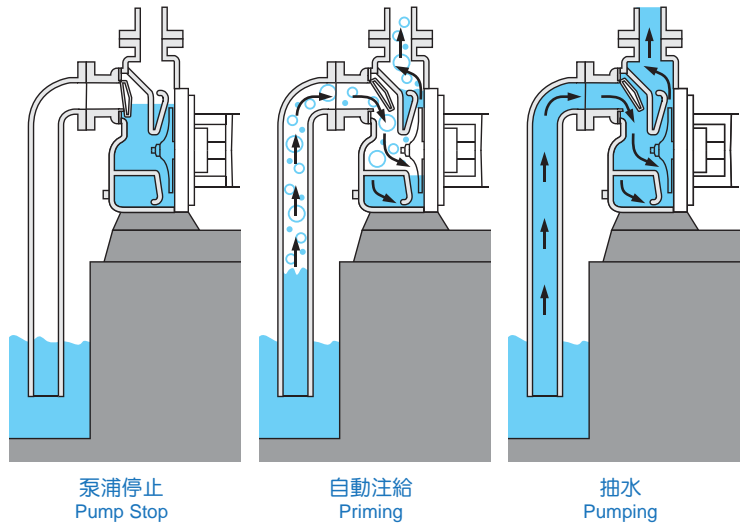
Note: SP65-30, SP75-50, SPH65-50 stand for reverse rotation.

自吸泵 Self-priming Pump

自吸泵具有自動注給(Self-Priming)功能。雖然一般離心泵浦可透過加裝自吸桶、底閥 或利用真空泵浦等來達到自動注給目的，但在一些使用環境下；比如流體雜質多或在偏遠地區作業時，這些附加裝置反而容易發生阻塞故障且增加處理的難度。另一方面，這些裝置也增加系統建置成本及保養複雜性。而自吸泵的自動注給功能非常適合解決這方面的問題。因此自吸式泵浦最常被應用在廢水處理以及油罐車、給水車、灑水車給水等用途上。

A self-priming pump is able to prime itself for pumping. Although a centrifugal pump is able to prime itself for pumping when attached to a self-priming tank, bottom valve or using a vacuum pump, these add-on devices can easily cause blockage, malfunction and increase operational difficulty under certain circumstances, e.g. when the liquid contains much debris or it is being operated in a remote area. In addition, these devices also increase system setup cost and complexity of maintenance. The self-priming pump, on the other hand, is most suitable solution in such cases. Thus, it is most often used in wastewater treatment, and oil tanker, water wagon and sprinkler truck.

工作原理 Operation Principle



產品特點

- ◆ 搭載半開放式葉輪，適用於污水、泥水、含有固體、長纖維等液體輸送。
- ◆ 新改良的中間支座及軸承座，振動及可靠度表現均比舊款優異。
- ◆ 機殼磨擦板設計，只需更換磨擦板，不需要更換整個機殼，可顯著節省修理成本。
- ◆ 不必加裝底閥，最初加水即可自行排氣揚水，減少灌水麻煩。
- ◆ 除污孔蓋設計，機殼內有雜物時可打開清除。
- ◆ 葉輪軸向間隙可外部調整，彌補葉輪自然損耗造成的性能減損。
- ◆ 出入口法蘭尺寸符合JIS 10K或ANSI 150Lb(選用) 規範，安裝方便
- ◆ 機殼、葉輪、軸等提供多種材質可供選定以適合不同使用環境。

Product Feature

- ◆ When equipped with semi-open impeller, it is suitable for transmission of wastewater, muddy water, or liquids containing solids or long fibers.
- ◆ Improved design of adaptor and bearing bracket can provide better performances on vibration and reliability than previous model.
- ◆ Only the wear plate needs to be replaced rather than the entire casing, significantly saving repair cost.
- ◆ Bottom valve not required; automatically evacuates air and retains water after the first prime, reducing the hassle of adding water.
- ◆ Designed with maintenance cover, which may be opened to allow for cleaning the interior of the casing.
- ◆ Impeller axial clearance may be externally adjusted, making up for diminished performance caused by natural wear.
- ◆ Inlet/outlet flange dimensions compliant with JIS 10K (standard) or ANSI 150Lb specifications (optional) for easy installation.
- ◆ Casing, impeller and shaft available in many materials for use in different application environments.

產品應用

- ◆ 工業污水坑、化學液輸送
- ◆ 酒、醋、醬油等釀造食品工業輸送用
- ◆ 船舶、礦場排水用途
- ◆ 一般工廠給水、廢水處理、農業灌溉
- ◆ 油罐車、給水車、灑水車等灌裝抽卸作業

Application

- ◆ Industrial sump, chemical transfer
- ◆ Transmission of alcoholic beverages, vinegar and soy sauce for the fermented foods industry
- ◆ Drainage for ships and mines
- ◆ General plant water supply, wastewater treatment, agricultural irrigation
- ◆ Cargo loading/unloading operation for tank car, sprinkler truck



O型自吸式泵浦
O Series Self-priming pump

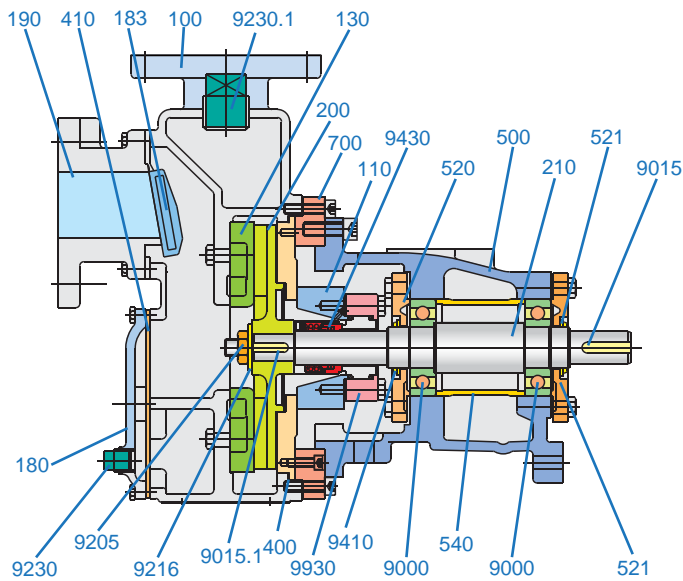
3D高效率葉輪
3D High-efficiency Impeller



半開放式葉輪
Semi-open Impeller

※註：適用於O-3S, O-4S
※Apply in O-3S, O-4S

■ O Series 零件表及構造圖 Parts List With Material of Construction



編號 No.	零件名稱 Parts Name	Mat. 1	Mat. 2	Mat. 3
100	機殼 Casing	FC200	SCS13	SCS14
110	中間支座 Adaptor	FC200	SUS304	SUS316
130	機殼摩擦板 Wear Plate	FC200	SCS13	SCS14
180	除污孔蓋 Maintenance Cover	FC200	SCS13	SCS14
183	止水膠塊 Check Valve	NBR	NBR	TEFLON
190	入水口座 Inlet	FC200	SCS13	SCS14
200	葉輪 Impeller	FC200	SCS13	SCS14
210	軸 Shaft	SUS410	SUS304	SUS316
400	機殼墊片 Gasket, Casing	非石棉 Non-Asbestos		
410	除污孔蓋墊片 Gasket, Maintenance Cover	非石棉 Non-Asbestos		
500	軸承座 Bearing Bracket	FC200	FC200	FC200
510	支架 Support Foot	SS400	SS400	SS400
520	非傳動側軸承蓋 Bearing Cover, NDE	FC200	FC200	FC200
521	傳動側軸承蓋 Bearing Cover, DE	FC200	FC200	FC200
540	軸承定位套筒 Bearing Position Sleeve	SS400	SS400	SS400
560	迷宮式擋油環 Labyrinth Oil Seal	BC	BC	BC
700	中座壓板 Lock Plate, Adaptor	N · A	FC200	FC200
9000	軸承 Bearing	6305/6306		
9000.1	軸承 Bearing	6305/6306		
9015	聯軸器固定鍵 Key, Coupling	S45C	S45C	S45C
9015.1	葉輪固定鍵 Key, Impeller	SUS304	SUS304	SUS316
9205	葉輪防鬆螺帽 Locknut, Impeller	SUS304	SUS304	SUS316
9216	葉輪螺帽防鬆墊圈 Lockwasher, Impeller	SUS304	SUS304	SUS316
9230	塞頭 Plug	FC200	SUS304	SUS316
9230.1	塞頭 Plug	FC200	SUS304	SUS316
9405	O型環 O-Ring	NBR	NBR	NBR
9405.1	O型環 O-Ring	NBR	NBR	NBR
9405.2	O型環 O-Ring	NBR	NBR	NBR
9410	擋水環 Water Slinger	NBR	NBR	NBR
9410.3	迷宮式擋水環 Labyrinth Water Slinger	AL	AL	AL
9430	機械軸封 Mechanical Seal	依使用條件指定 According to process conditions		
9440	油鏡 Oil Sight Glass	AL	AL	AL
9930	軸封蓋 Shaft Seal Chamber Cover	FC200	SUS304	SUS316

* NDE : Non-drive End DE : Drive End

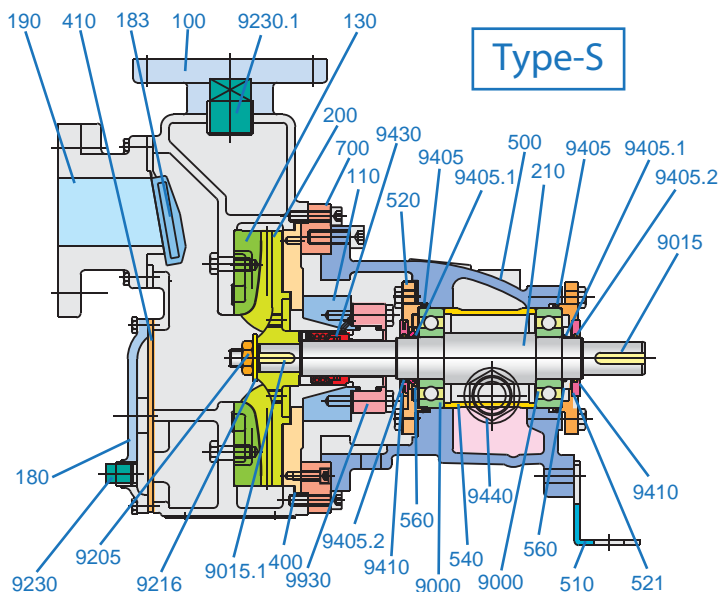
■ Type-S

“S”代表O系列的高性能版本，具備所有O系列自吸泵的產特點，另加上新增特色：

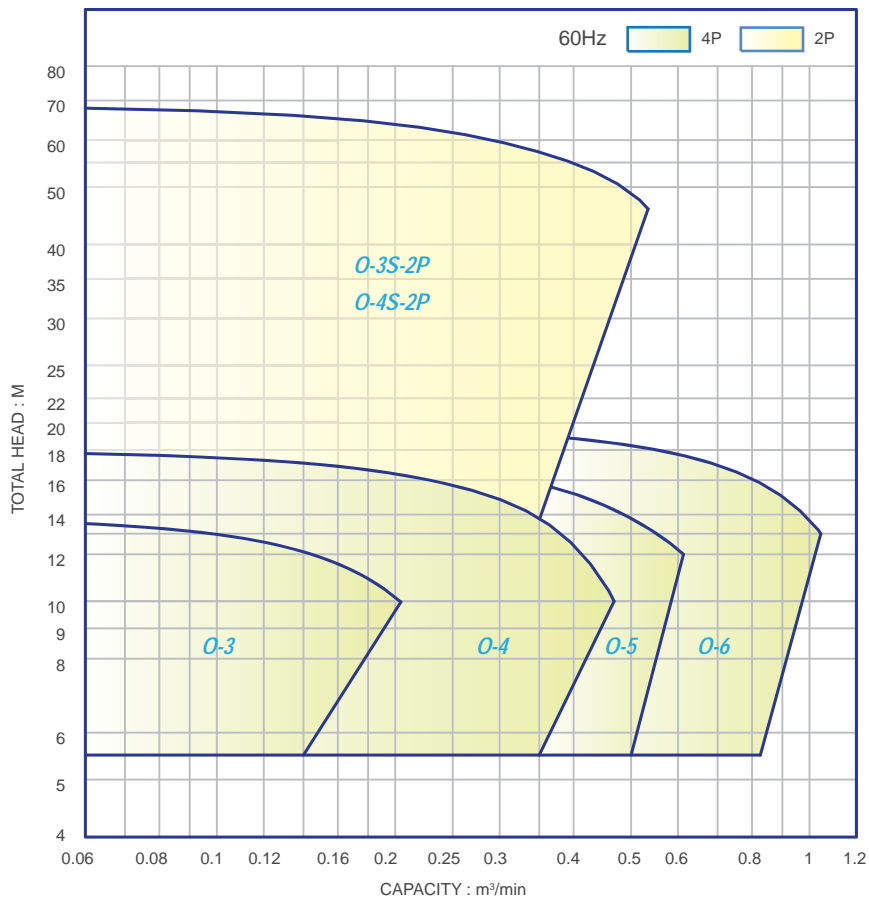
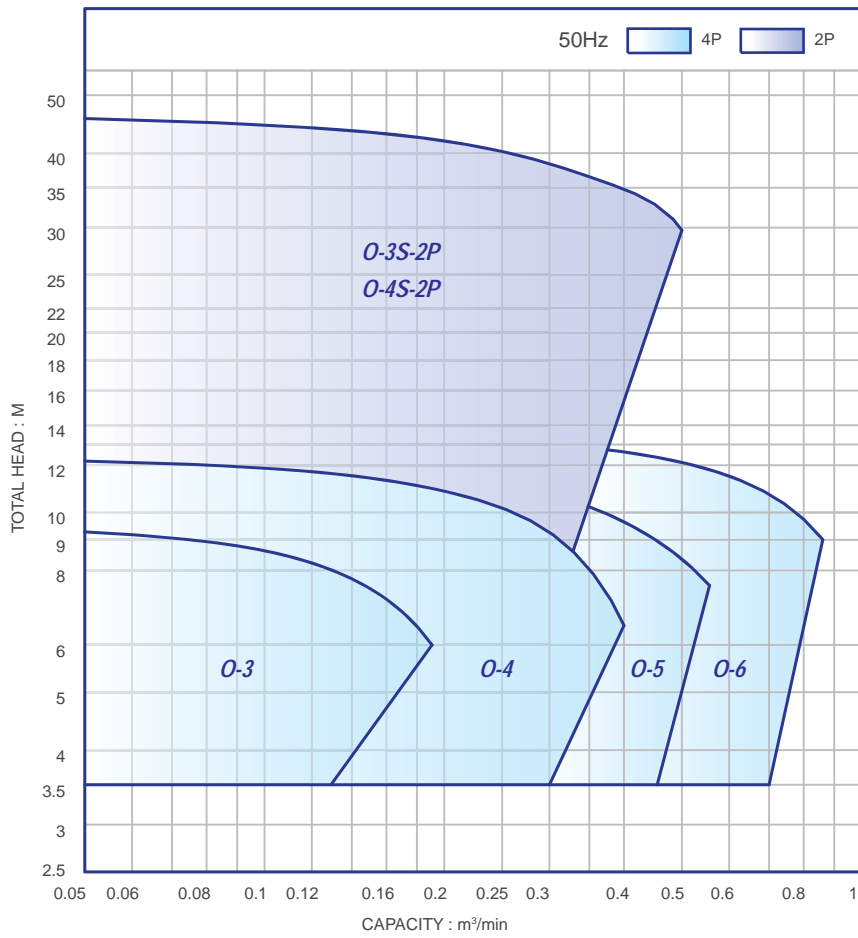
- ◆ 採用低NPSHr的3D半開放式葉輪，大幅提升自吸泵水力涵蓋範圍及效率，滿足高揚程、小流量的應用需求。
- ◆ 與製程泵同級背拉式架構與軸承座設計，可達到製程泵振動值4.5mm/sec以下要求標準，且軸承L₁₀壽命也大幅向上提升至17500小時以上。
- ◆ 機油潤滑式軸承座標準配備非接觸迷宮式密封，壽命比一般油封多出數倍。

Type S is the high-performance version of the O series. It has all benefits of the O series plus extra features:

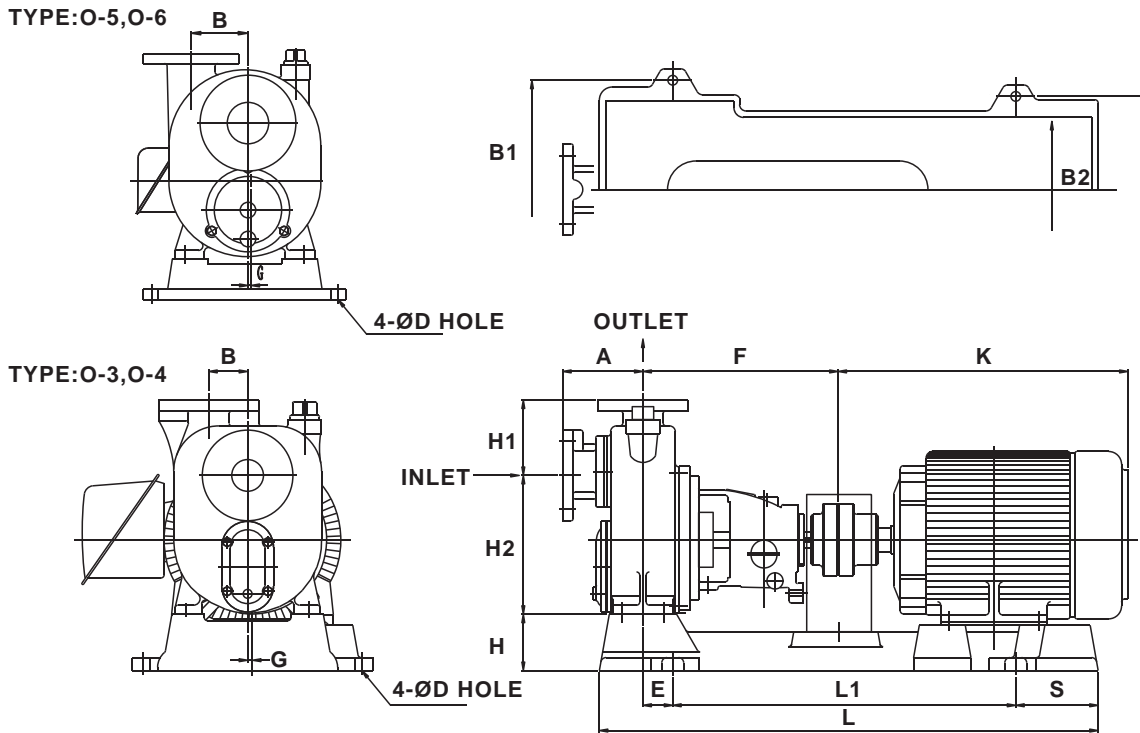
- ◆ Use of low NPSHr 3D semi-open impeller greatly improve range and efficiency of self-priming pump, meeting requirements for higher pressure and small flow.
- ◆ Same back pull-out structure and bearing bracket as process pump, meeting maximum acceptable vibration velocity of 4.5mm/sec for process pump, and bearing L₁₀ lifespan is also greatly increased to above 17500 hours.
- ◆ Oil lubricated bearing housing equipped with non-contact labyrinth seal, providing several times longer lifespan than normal oil seal.



性能曲線圖 Performance Curve



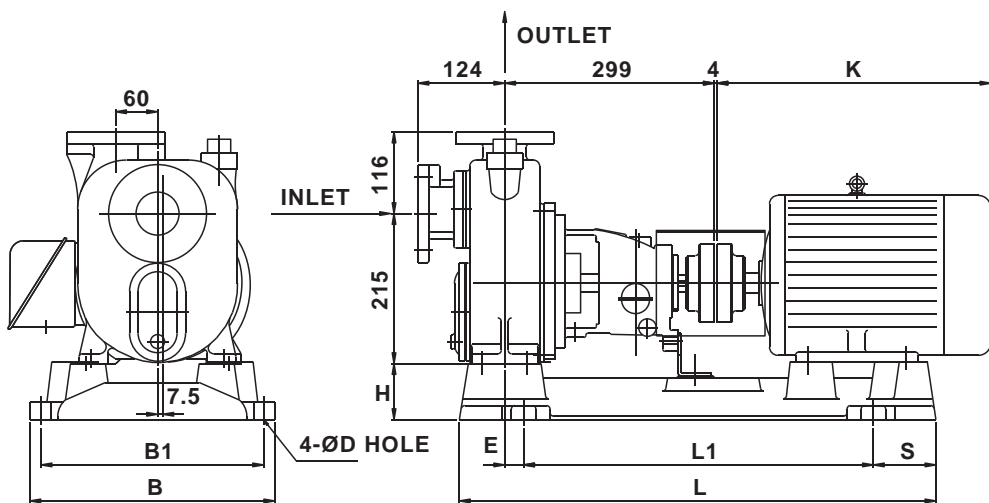
■ O Series 外型尺寸圖 Dimensions



單位Unit (mm)

型式 Type	In	Out	HP×4P	A	F	B	H1	H2	H	L	L1	B1	B2	E	S	G	D	K
O-3	40	40	1	125	291	60	117	215	60	600	428	288	230	12.5	100	7.5	15	272
O-4	50	40	2	125	291	60	117	215	60	628	454	292	248	3.5	104	7.5	15	322
O-5	65	65	3	156	300	105	125	255	73	697	523	340	282	6.5	92	6	15	374
O-6	80	80	5	160	308	110	133	262	79	711	528	360	306	15.5	95	6	15	391

■ O Series. Type S 外型尺寸圖 Dimensions



單位Unit (mm)

型式 Type	In	Out	馬達框號(IEC) Motor Frame	L	L1	B	B1	H	E	D	T	K	S
O-3S	40	40	90L	724	500	352	320	77	46	15	20	333	112
			112M	768	550	352	320	77	42	15	20	392	109
O-4S	50	40	132S	856	600	372	340	82	55	15	20	454	122
			160ML	983	700	420	380	125	68	15	20	608	141

客製化開發專案 Customized Development Services

本公司具有豐富客製化產品經驗，可針對客戶專用產品提供客製化專案開發服務。如您需要的產品規格不在型錄中或是有特別使用條件（例如特高壓力、特高黏度，或是更大或更小流量需求），請向本公司業務部門或是技術部門洽詢相關細節。

We are well experienced in customized products. Customized Development Services can be provided for exclusive products owned by the customer. In case your application is not covered by the products listed in our catalog or is subject to special operation requirements (such as ultra high pressure, ultra high viscosity, or for very large or very small flow rates), please consult our Sales Department or Technical Department for further assistance.

其他產品 Other Products



液封式真空泵浦
Liquid Ring Vacuum Pump



齒輪泵浦
Internal Gear Pump



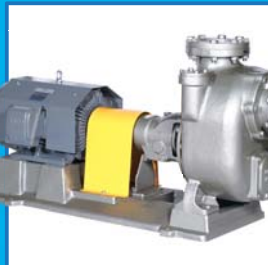
雙軸螺旋泵浦
Twin Screw Pump



機械助力真空泵
Mechanical Booster Vacuum Pump



高溫熱媒泵浦
High Temperature Pump



製程級自吸泵
Self-priming Process Pump



三軸螺旋泵浦
Three Screw Pump



離心式製程泵浦
Centrifugal Process Pump



三錦機器股份有限公司
SUNNY KING MACHINERY CO., LTD

| 官方網址 | Official Website : www.sunny-king.com.tw
| 聯絡我們 | Contact Us : skpump@sunny-king.com.tw

■ **台北公司 Taipei Office** 104台北市中山區民生東路二段147巷5弄12號
No.12, Alley 5, Lane 147, Sec. 2, Minsheng E. Rd., Zhongshan District, Taipei City 104, Taiwan
Tel:+886-2-2509-0049 Fax:+886-2-2509-4194

■ **新莊廠 Xinzhuan Factory** 242新北市新莊區新樹路234巷1號
No.1 Lane 234 Xinshu Rd. Xinzhuan District, New Taipei City, Taiwan
Tel:+886-2-2202-0224~6 Fax:+886-2-2202-7354

■ **中壢廠 Jhongli Factory** 320桃園縣中壢市南園路16號 (中壢工業區)
No.16, Nanyuan Rd., Jhongli City, Taoyuan County 320, Taiwan
Tel:+886-3-451-1969 Fax:+886-3-452-8602

地區經銷：

■ **台中 昌錦企業**
407台中市西屯區工業42路33號
Tel:+886-4-2359-4673 Fax:+886-4-2359-4723
E-mail:ccpump@ms57.hinet.net

■ **高雄 東震行**
807高雄市三民區中華二路199號
Tel:+886-7-321-1745~6 Fax:+886-7-321-1747
E-mail:t3211745@ms41.hinet.net

■ **昆山正錦精密机械有限公司**
215312江苏省昆山市巴城镇石牌京阪路1288号
Tel:0512-5782-3681~3 Fax:0512-5519-0466
E-mail:w-c@sunny-king.com.tw